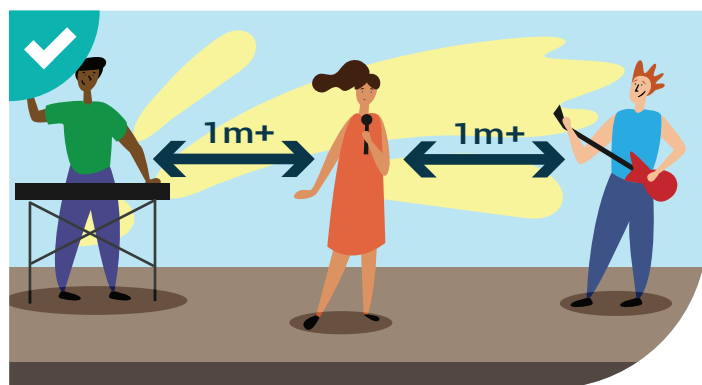


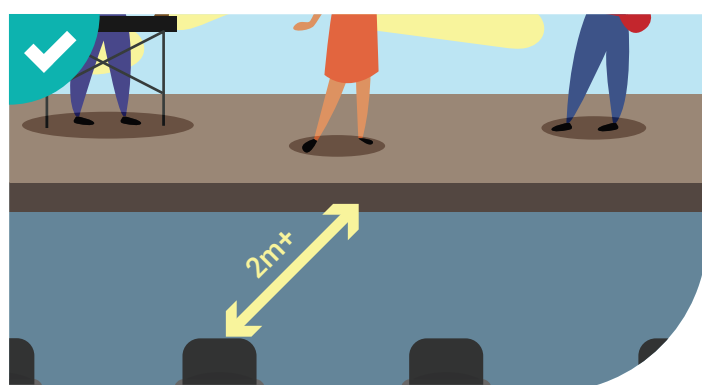
# FFWPU UK Policy for a Covid Secure Worship Service



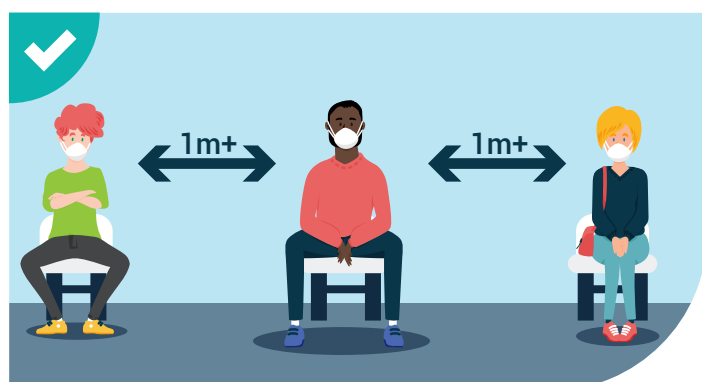
Version 1  
24/09/2020



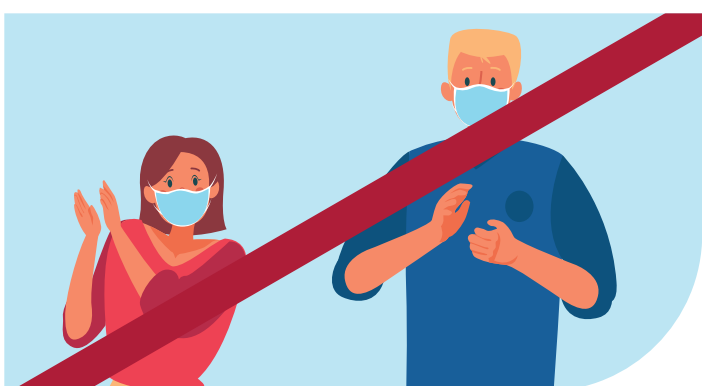
Maximum of 3 people on stage (or equivalent) with 1m+ social distancing.



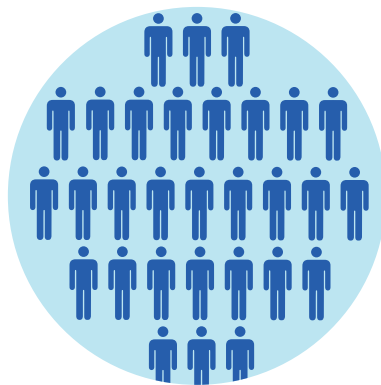
The Stage (or equivalent) must be at least 2m from the audience.



Seating must be spaced a minimum of 1m apart.



Singing is only allowed by those on stage, no shouting, chanting or clapping by anyone.



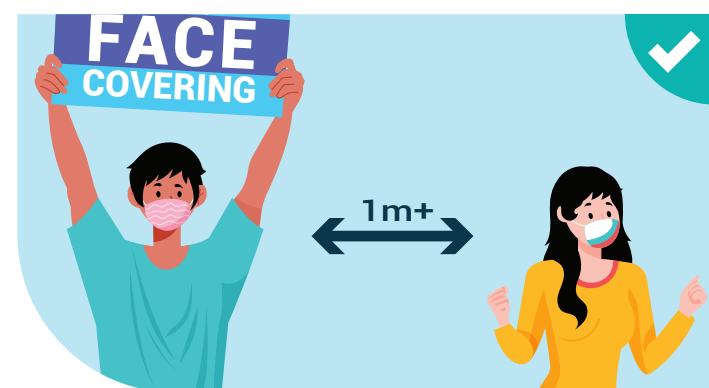
Where permissible, a maximum of 30 people in the building at any one time.



Hand sanitiser should be provided at various locations and face coverings available for those without.



Collect and encourage visitors to provide contact details for the NHS Test & Trace.



When indoors 1m+ social distancing with face coverings must be in force.



No physical contact, socialising or being closer than 1m with anyone outside your household.



Rooms should be well ventilated, with windows open.



Groups must be no larger than 6 people unless from the same household.