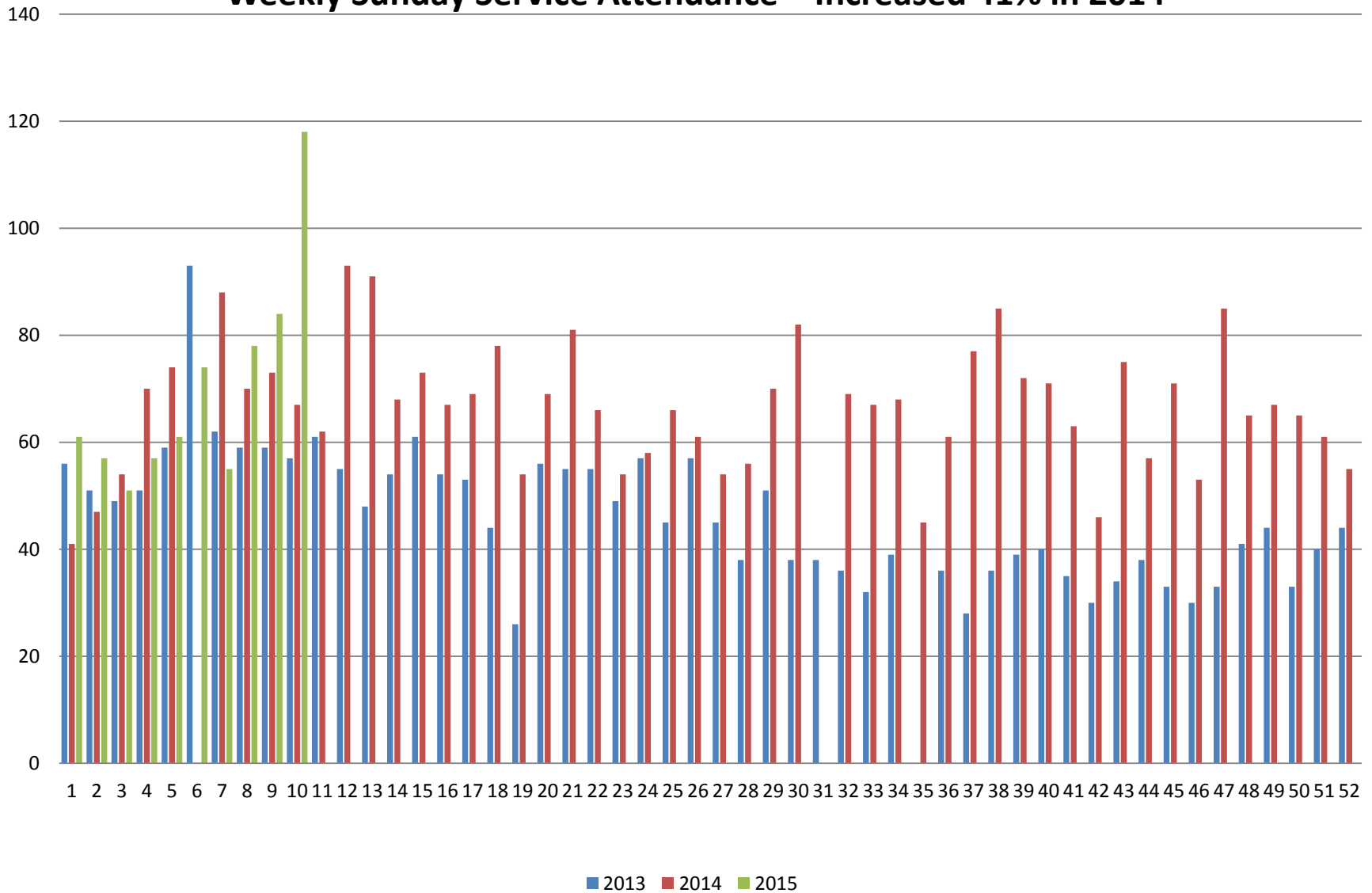


Portland Family Peace Fellowship



Weekly Sunday Service Attendance – Increased 41% in 2014



Year to Year Comparisons

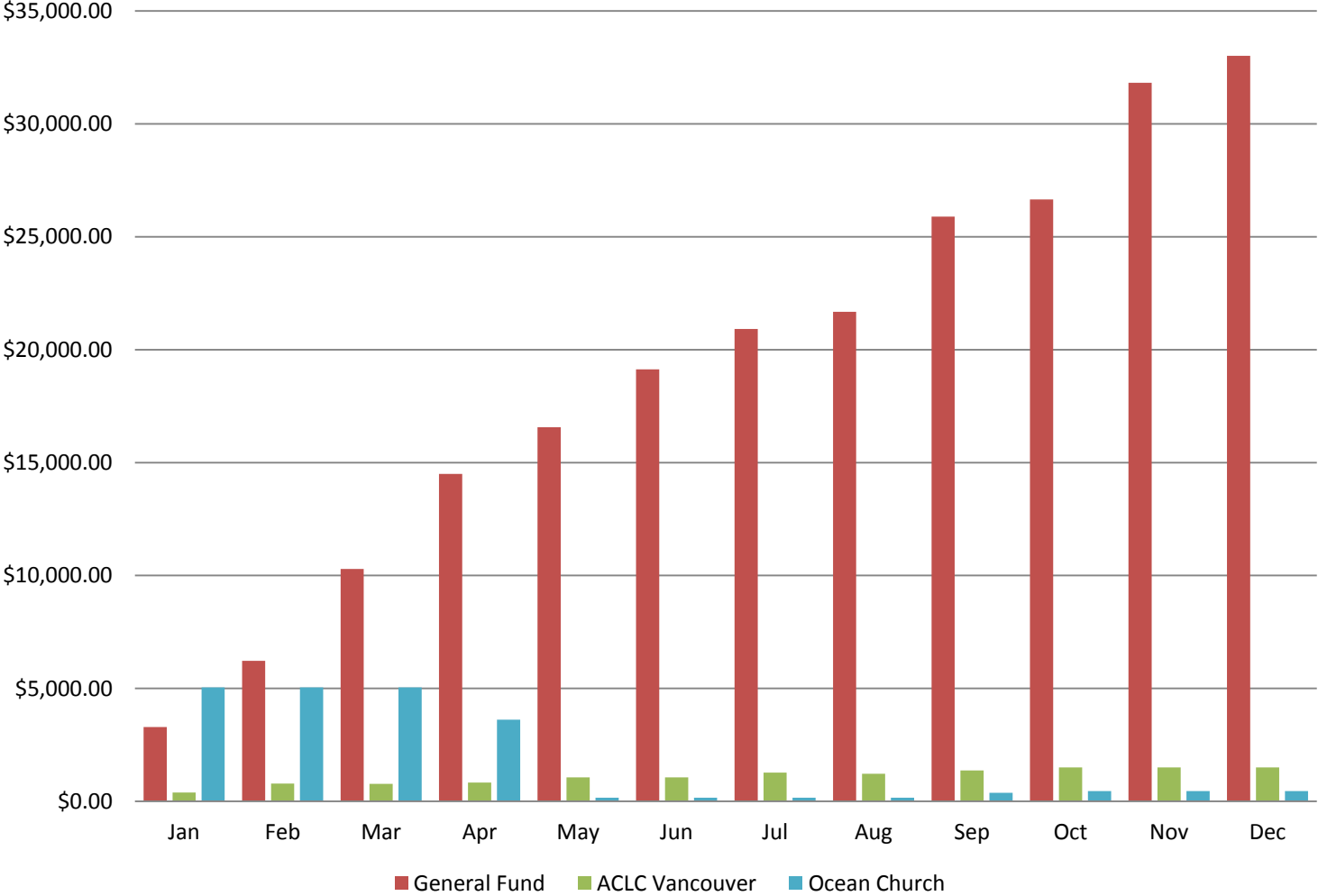
- **Average Sunday Service Attendance**

	<u>2013</u>	<u>2014</u>	
Members	43.71	62.73	
Guests	1.62	1.38	
<hr/>			
Total	45.33	64.12	41% increase

- **Donations**

	<u>2013</u>	<u>2014</u>	
Avg. Weekly	1,376	1,401	
Total	71,599	72,873	1.78% increase

Account Balances – General Fund Increased 10x



Worship Dancing

