

Advisory for the PSWM Rally with True Mother - Prudential Center, December 28

Demian Dunkley
December 26, 2019



Advisory for Peace Starts With Me Rally - Prudential Center, December 28, 2019

Merry Christmas!

Here is some information to help you prepare for the Rally with True Mother this Saturday in New Jersey.

Times and Program

Doors open at 1:30 p.m. on Saturday, December 28.

The main program starts at 3 p.m. and is expected to conclude around 5 p.m.

Prudential Center Address, Parking, and Entrance

The Prudential Center is located at 25 Lafayette St, Newark, NJ 07102

You can find information about how to get there by driving or public transportation, and about parking at their website, under 'Plan': www.prucenter.com/plan-your-visit

Ticket holders will use the entrance at the Investors Bank Tower on the northeast corner of Prudential Center at Mulberry Street and Edison Place.

If you need to pick up your ticket, please go through the entrance at the Ford Tower on the southeast corner of Prudential Center at Mulberry Street and Lafayette Street.

The parking fees range from \$14 to \$40. All parking lots are within two blocks from the arena.



Security

According to the Prudential's instructions, everyone entering the venue, without exception, will be going through airport-style security before entering the ticket area. Please allow additional time for screening.

Only small bags will be allowed. Backpacks and other large bags will not be allowed, and you will be asked to rent a locker for your stuff. Please plan accordingly to allow for a smoother entrance. No outside

food or drinks are permitted to be brought into the venue.

Seating

Seating is assigned by ticket. You need the Prudential's printed ticket to enter and get to your seat.

If you haven't yet obtained your ticket, please connect with your local pastor, as he or she may have tickets for you.

There will also be 'Ticket Tables' in the Ford Tower on the southeast corner of the building, as mentioned above.

If you require special seating for wheelchair, the Prudential's staff will be able to assist you and provide you with specific tickets for designated ADA.

Translation

Translation will be provided by using a cell phone conference system.

Please bring a fully charged cell phone (it does not have to be a smart phone) and personal headsets. If some in your party do not have phones (such as children), we recommend a headphone splitter and additional headsets to allow another person to listen from the same phone. Another option is to get a cheap prepaid phone.

To access translation, you will call a toll-free number and be connected directly to the translation.

Translation will be available from English to Korean, Japanese, and Spanish, and True Mother's speech will be translated from Korean to English, Japanese, and Spanish.

Here are the numbers for each language:

English/Korean: [425-436-6244](tel:425-436-6244) or [712-775-7435](tel:712-775-7435)

Spanish: [319-527-4752](tel:319-527-4752)

Japanese: [319-527-2675](tel:319-527-2675)

These numbers will also be printed on the program for the event.

Food and Beverages

No outside food or beverages are allowed in the venue. We recommend eating lunch before entering the venue. However, the foyer at the Prudential has ample concession stands that will be open and offer snacks for purchase.

Young Children

We welcome families with children of all ages. We do, however, ask to please be considerate to others in your area, and be responsible for your children if they are noisy. It may not seem so, but the sounds of crying or even loud talking travel throughout the main hall. Especially during the main speech, we ask that if your young child or baby is crying, please take them to the hallway until they settle down.

Dress Code

Please dress with your Sunday attire. Bright and cheerful to meet True Parents!

Video and Photography

This event will be filmed with video and still cameras, and it will be broadcast live through the internet. By participating in this event, you give your consent for your image to be used, including your minor children.

Prudential Center Website

For more venue information, please visit www.prucenter.com/

Accommodation and Transportation

Please be sure to arrange your own accommodations and transportation to and from the Prudential Center at 25 Lafayette St, Newark, NJ 07102.

You can also ask your pastor if he or she has already made any transportation or accommodations plans for your group.

The Prudential Center is located at the heart of Newark. Some possible hotels to stay at include the Courtyard Marriott Downtown Newark, Hotel Indigo, and the Doubletree by Newark Penn Station. You can see more options in this [Google Map link](#).

Transportation

The Prudential Center website includes detailed driving instructions for the Tri-State area, as well as public transportation options. Visit www.prucenter.com/plan-your-visit to find the specific details for your circumstances.

If you're driving, please visit the link above for parking information.

Here are some suggestions for public transportation:

The closest train station to the Prudential Center is Newark Penn Station in Newark, NJ, which is 3 blocks away from the Arena, less than 10 minutes' walk. The fare from NY Penn Station to Newark Penn, NJ is \$5.25 on the off-peak trains.

If you're coming from EWR airport by public transportation, you can take the airport Air-Train (the Monorail) to Newark International Airport train station, and then take the train to Newark Penn Station. Prudential Center is just a few blocks away within 10-15 minutes walking distance.

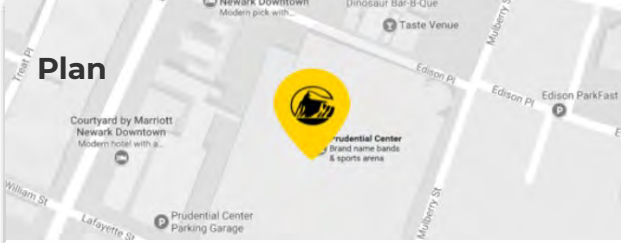
See you at the Prudential Center this Saturday!



Prudential Center



Plan Your Visit

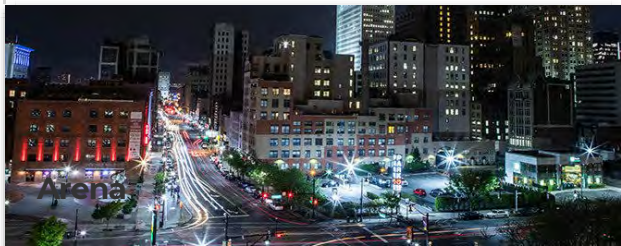


Directions

Prudential Center is one of the most easily accessible arenas in the country with over

Premium

[GET DIRECTIONS](#)

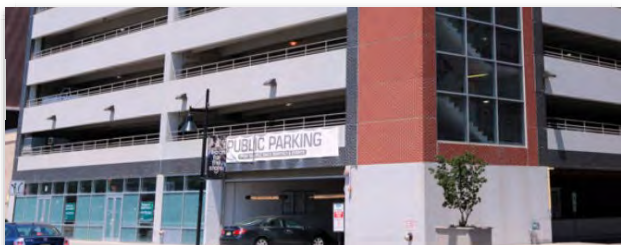


Public Transportation

Just two blocks from Newark Penn Station & connected to Newark Broad Street

[LEARN MORE](#)

Connect



Parking

Checkout detailed maps of the parking options surrounding the Rock. You can

[GET DIRECTIONS](#)

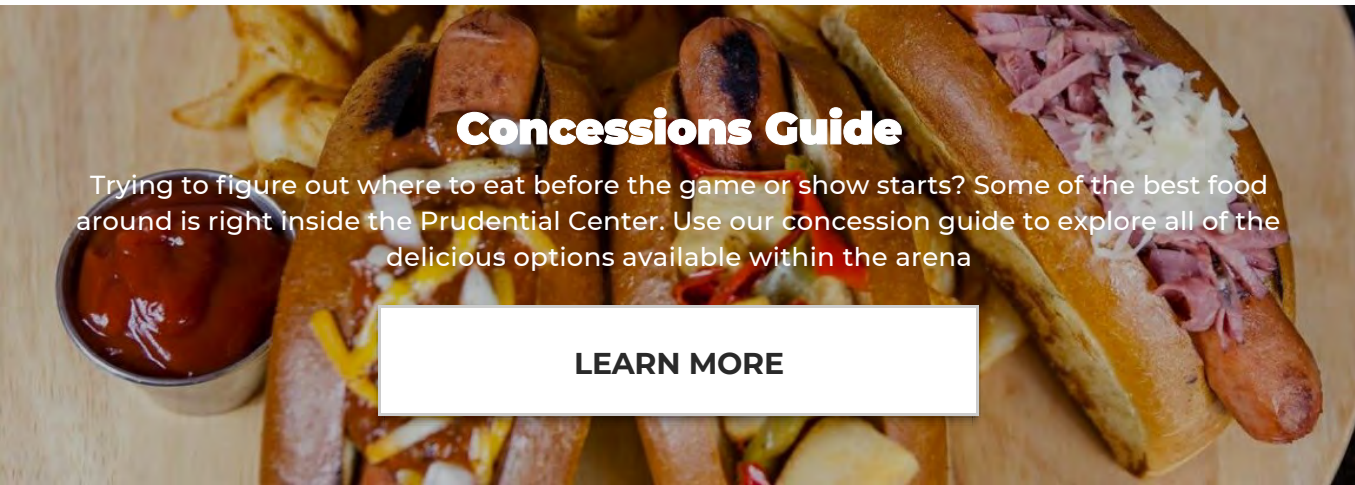




Uber Pick Up/Drop Off

With designated pick up locations outside Prudential Center, getting an Uber after

[LEARN MORE](#)



Concessions Guide

Trying to figure out where to eat before the game or show starts? Some of the best food around is right inside the Prudential Center. Use our concession guide to explore all of the delicious options available within the arena

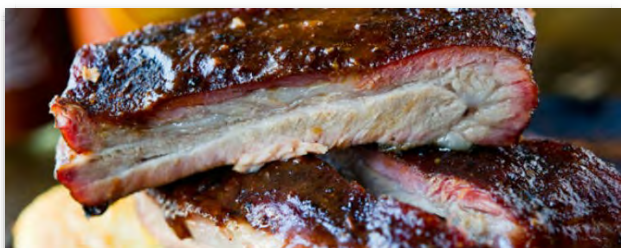
[LEARN MORE](#)



Where To Stay

Downtown Newark is home to a range of great hotels with some just steps away

[VIEW AREA HOTELS](#)



Area Restaurants & Bars

The Arena District is stacked with some great restaurants & bars. Wether you're

**Our
Partners**



Prudential Center

Events

Plan

Premium

Arena

Connect



©2007-2019 Prudential Center. All Rights Reserved. [Terms Of Service](#) [Privacy Policy](#)

The Prudential Center trademark and logos are used under license from The Prudential Insurance Company of America, a subsidiary of Prudential Financial, Inc., headquartered in the USA, neither of which is affiliated with Prudential plc, a company headquartered in the United Kingdom.





Events

Plan

Premium

Arena

Connect

Host An Event



Prudential Center

Disney On Ice

Disney On Ice presents Dream Big! is coming to Prudential Center this January!



GET TICKETS



December 27 | 7PM

Devils vs Maple Leafs
Presented By Investors Bank

[MORE INFO](#) | [TICKETS](#)

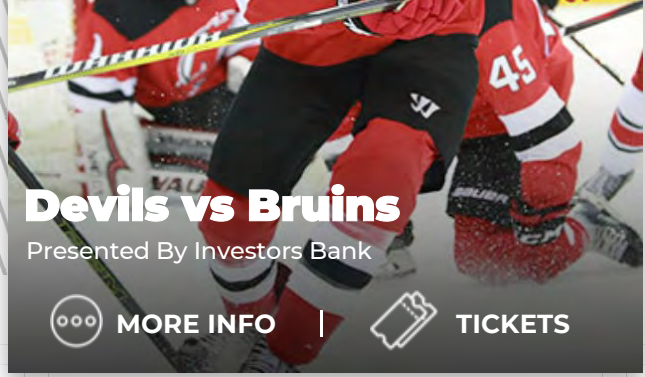
December 30 | 2PM

Harlem Globetrotters
Pushing the Limits

[MORE INFO](#) | [TICKETS](#)

December 31 | 1PM

January 3 | 9PM



Devils vs Bruins
Presented By Investors Bank


000 MORE INFO | TICKETS



Seton Hall vs. Georgetown
Pirates Men's Basketball at the Rock

000 MORE INFO | TICKETS

January 4 | 7PM



Devils vs Avalanche
Presented By Investors Bank

000 MORE INFO | TICKETS

January 7 | 7PM



Devils vs Islanders
Presented By Investors Bank

000 MORE INFO | TICKETS

January 10 | 7:30PM



SEVENTEEN
Ode To You World Tour

000 MORE INFO | TICKETS

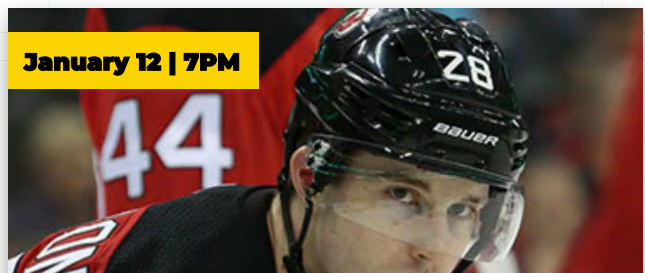
January 11 | 4PM



Seton Hall vs. Marquette
Pirates Men's Basketball at the Rock

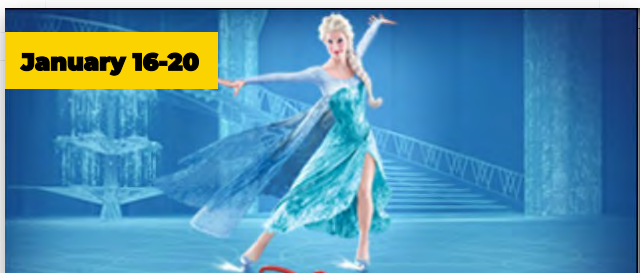
000 MORE INFO | TICKETS

January 12 | 7PM



Devils vs Bruins

January 16-20



Elsa

Devils vs. Lightning
Presented By Investors Bank

[MORE INFO](#) | [TICKETS](#)

Disney On Ice
Presents Dream Big

[MORE INFO](#) | [TICKETS](#)

January 22 | 8:30PM

Seton Hall vs. Providence
Pirates Men's Basketball at the Rock

[MORE INFO](#) | [TICKETS](#)

January 24-26

Monster Jam
Triple Threat Series

[MORE INFO](#) | [TICKETS](#)

Competitors shown are subject to change. © 2018 Feld Motor Sports, Inc.

[SEE ALL EVENTS](#)

Event Day Suites
Make the Night Unforgettable

Uniquely tailored to you and your guests' desired experience, suites offer a private setting from which to enjoy the very best in live sports and entertainment

[LEARN MORE](#)



Concession Guide



Brew Finder

Never Miss Out

Sign Up and never miss any of the action at The Rock. From show announcements to exclusive event presales, joining definitely has its perk!

First Name Last Name

Email Address

SIGN UP NOW

Our Partners



Events

Plan

Premium

Arena

Connect



Sun, Dec 29 < > Mon, Dec 30 < > 2

Max price/night

\$0 \$437+

Sort by Guest rating More filters

TRYP by Wyndham Newark Downtown \$134

4.2 (552)

Hotel Hip hotel with a free airport shuttle Free Wi-Fi



Courtyard by Marriott Newark Downtown \$139

4.2 (704)

3-star hotel Modern hotel with a restaurant & WiFi Free Wi-Fi



Hampton Inn & Suites Newark-Harrison-Riverwalk \$83

4.2 (865)

3-star hotel Modern hotel with a pool & a shuttle Free Wi-Fi Free breakfast



Best Western Plus Robert Treat Hotel \$125

3.9 (1,709)

3-star hotel Modest hotel with dining & a gym Free Wi-Fi Free breakfast



DoubleTree by Hilton Newark Penn Station \$133

3.9 (1,148)

4-star hotel Polished hotel with an airport shuttle Free Wi-Fi



Hotel Indigo Newark Downtown \$110



Showing results 1 - 20

About pricing

